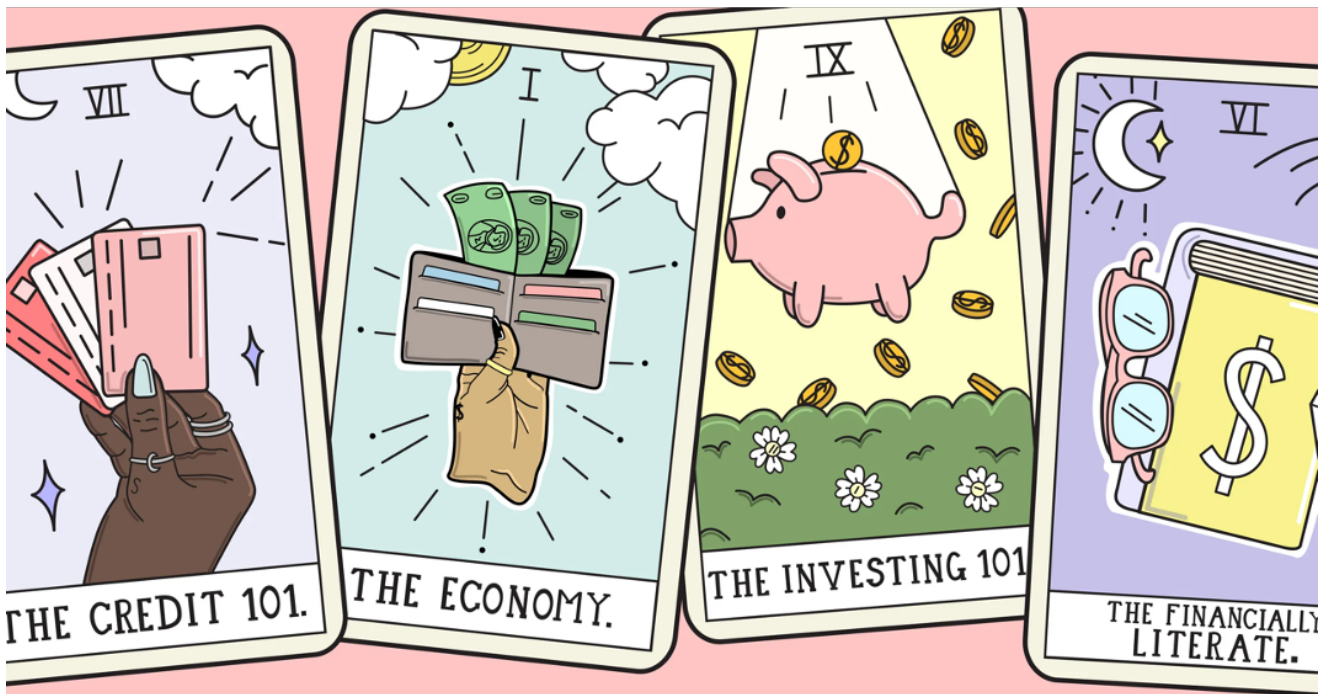


# SOCI 102:22

## Introduction to Sociology II



### Instructor:

Dr. Joel Z. Garrod  
jgarrod@stfx.ca

### Location:

MULH 3030  
U4/U5

### Office Hours:

By appointment

In this course, we will expand on the key thinkers, concepts, and subfields of sociology explored in SOCI 101. Following from the view that what all sociologists have in common is a *social* approach to human behaviour, this course is meant to get you thinking socially about what it means to live in a modern capitalist society.

After first exploring (and critiquing) how sociologists study their subject matter, we will then move on to an examination of the different ways in which the organization of modern capitalist society contributes to specific ways of thinking about the economy, drugs, politics, the self, animals, disability, racism, men, and meat. The course will conclude with a reflection on how globalization is transforming our society, and what we might do to fix it.

# Course Objectives & Textbook

By the end of this course, you should have:

- A broad grasp of the history of sociological thinking
- A general knowledge of sociological concepts and theories
- A critical view of the meaning and nature of power and power relations
- An understanding of some of the major issues facing contemporary global society



All readings for this course can be found on Moodle



I truly believe that this course is relevant to your lives. If, at any time during this course, you feel that what we're learning isn't useful, I urge you to ask me: "Why should I give a damn?"

I'll gladly take time to explain why I believe what we're learning is important for you to know. And if I can't explain why, I'll amend that section of the course.

# Requirements

**Attendance** is absolutely vital to this course, and will likely be a necessary part of getting a good grade. In return for attending, I promise to make the course interesting, and worthwhile. If you are unable to attend regularly, please talk to me about possible accommodations.

The **Midterm** will assess your understanding of course materials and concepts up to the middle of the term. It will consist of a number of short answer questions. **Held in-class on Feb 10**

The **Comedy Paper** will evaluate your ability to reflect on the relationship between comedy and social critique. You will choose one comedy clip, and write three to five pages about how that clip relates to a taken-for-granted aspect of modern life. **Due Mar 28**

The **Take-Home Final Exam** will assess your understanding of course material and concepts from the entire term. It will consist of a single essay question. **Due during exam period**

Grading		
✓	Attendance:	10%
✓	Midterm:	20%
✓	Comedy Paper:	35%
✓	Take-Home Exam:	35%

<b>All citations in APA or ASA Style</b>	<b>Double-spaced, 12 point, Times New Roman font</b>	<b>Late items lose 5 marks per day</b>
--	--	--



# Class Schedule

Date	Topic	Readings
Jan 17	Introduction	Syllabus
Jan 20	Thinking Like a Sociologist	Mills, "The promise"  Peterson, "Other countries have social safety nets. The US has women"
Jan 24	Ways of Knowing I	Mann, "Socio-logic"
Jan 27	Ways of Knowing II	Tuhiwai Smith, "Research through imperial eyes"
Jan 31	Ways of Knowing III	Graeber and Wengrow, "Wicked liberty"
Feb 3	Thinking Socially About Capitalism I	Marx, "The two factors of a commodity"  Marx, "Commodity fetishism"
Feb 7	Thinking Socially About Capitalism II	Wood, "The agrarian origin of capitalism"
Feb 10	<b>Midterm</b>	No readings
Feb 14	Thinking Socially About Drugs I	Pollan, "The invisible addiction"
Feb 17	Thinking Socially About Drugs II	Maté, "It's not in the genes"  Maté, "Dislocation and the social roots of addiction"
Feb 21	Winter Break	No readings
Feb 24	Winter Break	No readings

Date	Topic	Readings
Feb 28	Thinking Socially About Drugs III	Film: <i>Addicted to Pleasure: Sugar</i>
Mar 3	Thinking Socially About the State	Heilbroner, "The politics of capitalism"
Mar 7	Deviance and Social Control	Foucault, "Panopticism"
Mar 10	Thinking Socially About the Self	Burkitt, "Society and the self"
Mar 14	Thinking Socially About Animals	Taylor, "What is an animal?"
Mar 17	Thinking Socially About Disability	Taylor, "All animals are equal (but some are more equal than others)"
Mar 21	Thinking Socially About Racism	Waldron, "Not in my backyard"
<b>Drop Date March 22</b>		
Mar 24	Thinking Socially About Men and Masculinities	Ging, "Alphas, betas, and incels"
Mar 28	Thinking Socially About Meat I	Bisson, "They're made out of meat"
		Taylor, "Meat: A natural disaster"
		Film: <i>Food Inc.</i>
Mar 31	Thinking Socially About Meat II	Film: <i>Food Inc.</i>
Apr 4	Thinking Socially About Capitalism III	Fisher, "Reflexive impotence, immobilization and liberal communism"

Date	Topic	Readings
Apr 7	Thinking Socially About Fixing the World	Film: <i>The Yes Men Fix the World</i>
Apr 11	Globalization	Robinson, "Reflections on a brave new world"
Apr 14	Review and Wrap Up	No readings



## Additional Information

### COVID-19

The 2021–2022 academic year is taking place during an exceptional period of human history. As the COVID-19 pandemic is still ongoing, we may have to adjust the course assessment plan and/or delivery method with little or no notice. You may also have to stay home from class for various reasons related to COVID-19 (such as simply feeling ill). If this happens to you, please contact me so that we can discuss an alternative to your attendance grade for that class. Lastly, it is important that you take care of yourself by getting adequate amounts of sleep, and by taking appropriate mental health breaks. The university website on COVID-19 provides more information and links (<https://www.stfx.ca/coronavirus>).

## **Academic Honesty and Plagiarism**

As this course involves the production of written work, you should familiarize yourself with the standards for proper referencing of all cited materials, such as books, journal articles, newspaper articles, websites, and so on. Students that attempt to pass off someone else's work as their own (i.e., plagiarism) will be dealt with through the university policy on academic honesty. Please ensure that you fully understand this policy (see section 3.8 of the academic calendar, found at: <https://www2.mystfx.ca/registrars-office/academic-calendars>). Resources for avoiding plagiarism can be found on the library website (<https://www2.mystfx.ca/library/plagiarism>).

## **Writing Assistance**

Despite the fact that this is a writing-intensive course, we will not be able to spend much time on the craft of writing. If you need assistance with your writing, I recommend booking an appointment with me or visiting the Student Success Centre (<http://www2.mystfx.ca/student-success/>).

## **Accommodations**

If you have an injury, develop an illness, or encounter a personal crisis that will impact your progress in this course, please email me as soon as you are able. This will ensure that we find a way for you to complete the course. The Health and Counselling Centre is another resource available to you (<http://www2.mystfx.ca/health-and-counselling/>).

If you have any disabilities that require an accommodation in teaching style or evaluation, please speak to me as soon as possible so we can implement those accommodations. You may also want to contact the Tramble Centre for Accessible Learning (<https://www2.mystfx.ca/accessible-learning/tramble-centre-accessible-learning>).

## **Equity and Discrimination**

Everyone learns more effectively in a respectful, safe, and equitable learning environment free from discrimination or harassment. I invite you to work with me to create a classroom space that fosters and promotes values of human dignity, equity, non-discrimination and respect for diversity. These values and practices are in accord with the StFX Discrimination and Harassment Policy which can be found at (<https://www2.mystfx.ca/equity/policies>). Please feel free to discuss with me any questions or concerns you have about equity in our classroom or in the StFX community. If I cannot answer your questions or help you address your concerns, I encourage you to talk to the Chair/Coordinator of the Department/Program or the Human Rights and Equity Advisor.

## **Copyright**

The materials in SOCI 102: 22 at StFX are the property of the instructor, unless stated otherwise by the instructor. Online posting or selling of this material to third parties for distribution without permission is subject to Canadian copyright law and is strictly prohibited.

## **Grade Scale**

A+ = 90-100	B+ = 77-79	C+ = 67-69	D+ = 57-59
A = 85-89	B = 73-76	C = 63-66	D = 53-56
A - = 80-84	B - = 70-72	C - = 60-62	D - = 50-52
F = Below 50			